



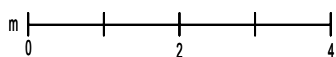
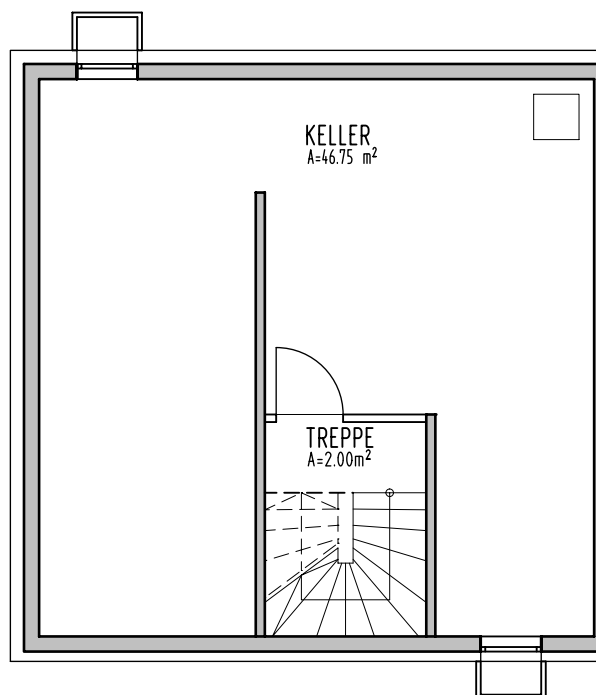
Reiheneigenheim 11 - Typ Sevilla

UG Treppe 2.00m²

WF Untergeschoss gesamt 2.00m²

UG Keller 46.75m²

Nutzfläche gesamt 46.75m²





Reiheneigenheim 11 - Typ Sevilla

| | |
|----------------|---------------------|
| EG Flur | 3.27m ² |
| Garderobe | 3.38m ² |
| Küche | 7.70m ² |
| WC | 2.24m ² |
| Wohnen/Essen | 32.65m ² |
| Terrasse 50% | 6.16m ² |

Erdgeschoss gesamt 55.40m²

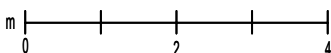
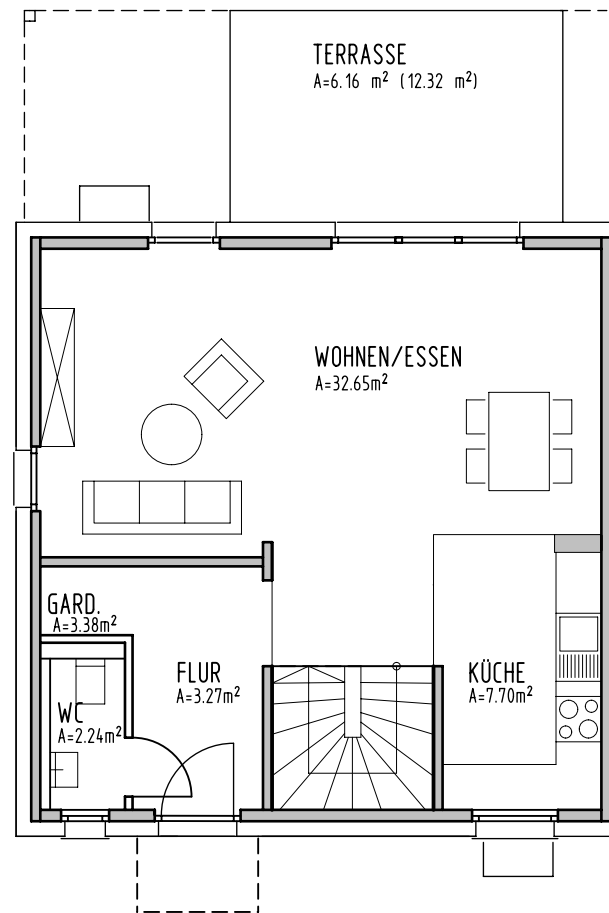
| | |
|---------------|---------------------|
| OG Bad | 7.27m ² |
| Schlafen | 15.43m ² |
| Flur | 3.51m ² |
| Zimmer 1 | 10.41m ² |
| Zimmer 2 | 12.19m ² |

Obergeschoss gesamt 48.81m²

UG Treppe 2.00m²

WF Untergeschoss gesamt 2.00m²

Wohnfläche Reiheneigenheim - Typ Sevilla 106.21m²





Reiheneigenheim 11 - Typ Sevilla

| | |
|----------------------------|---------------------------|
| OG Bad | 7.27m ² |
| Schlafen | 15.43m ² |
| Flur | 3.51m ² |
| Zimmer 1 | 10.41m ² |
| Zimmer 2 | 12.19m ² |
| Obergeschoss gesamt | 48.81m² |

